

tanaca

3D WALL DESIGNS



DURABLE, LIGHTWEIGHT & ECO-FRIENDLY WALL PANELS

Simply Stunning!

**Durable, flexible, visually striking, eco-friendly, paintable
and surprisingly affordable!**

We present our modern and exciting 3D Wall Panels range. Made out of bamboo and sugarcane fibers, our product is 100% recycled, compostable and is therefore 100% biodegradable. These panels are easy to install and can be painted in any colour of your choice, which will transform any wall into an elegant and sophisticated work of art!

Add that "WOW" factor - feature walls no longer need to be restricted to a mere splash of colour. Let us help you add dimension to your walls! Elegant, luxurious, modern and funky wall decoration for almost every room of the house. Home theatres, lounges, hallways, ceilings, bedrooms, entrances : Give Your Walls Life!

Gaps



Bricks



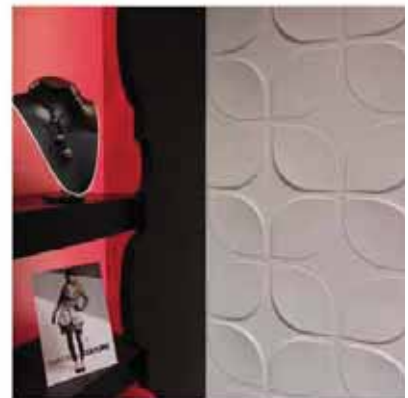
Ellipses



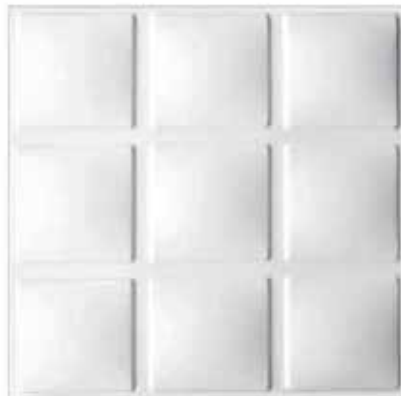
Vaults



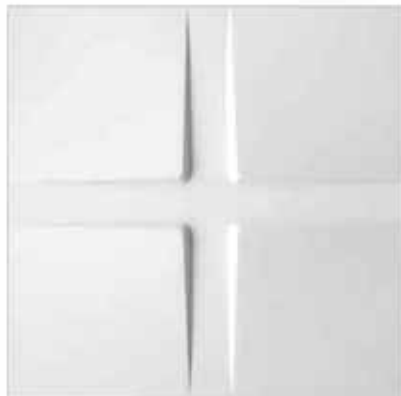
Sweeps



Cubes



Pitches



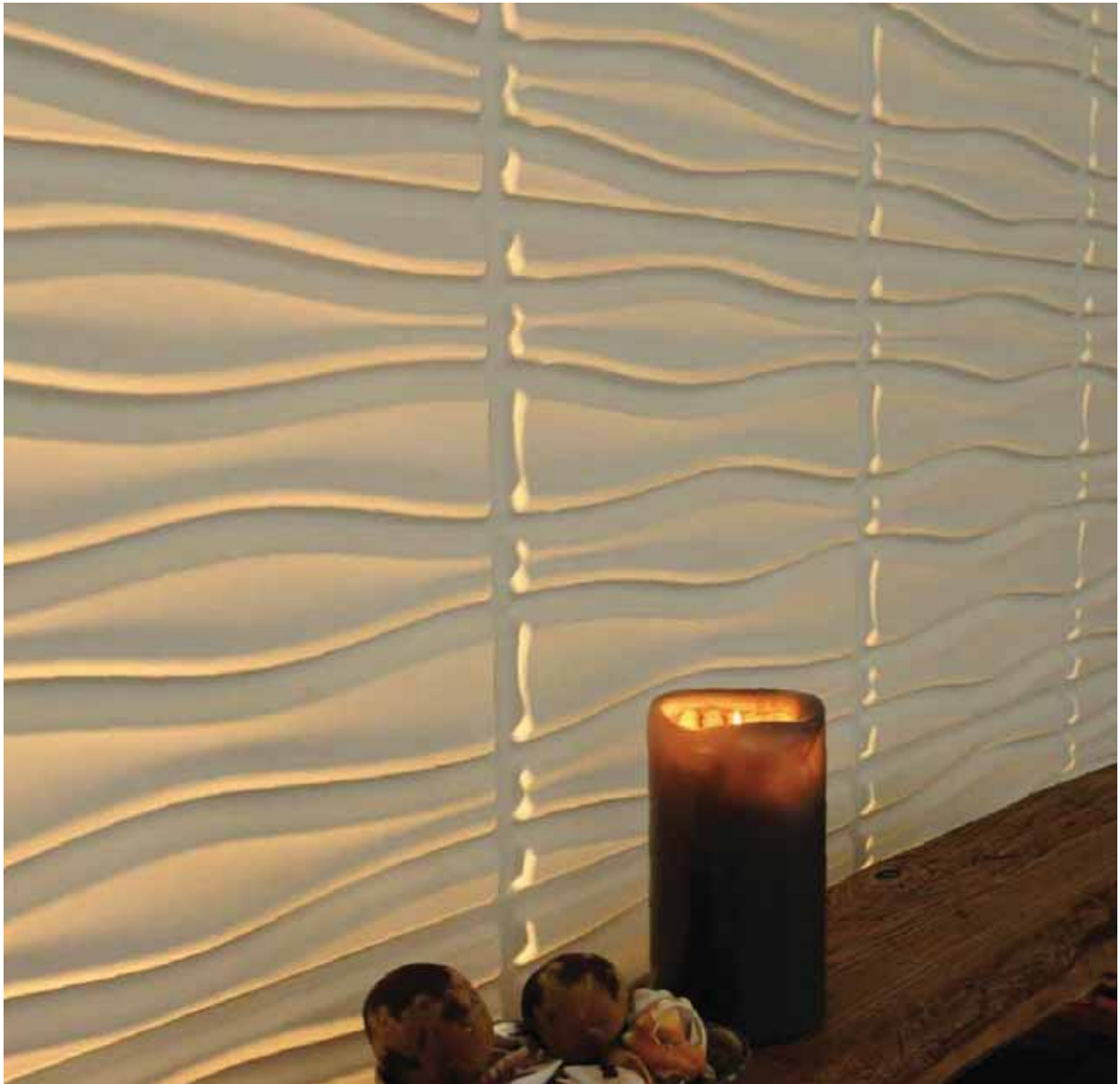
Squares



Craters



Flows

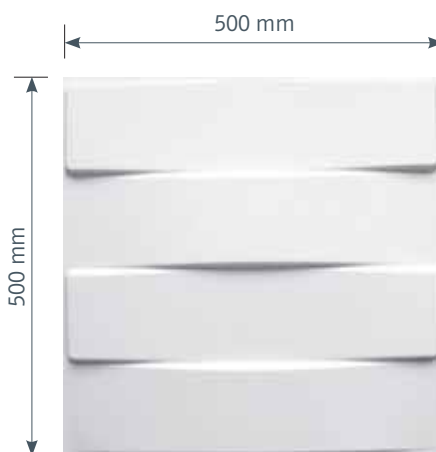


Sands



Product Specification

- Size:** 500 x 500 mm with +/- 0.5 mm tolerance sideways per 500 mm and +/- 0.7 mm diagonal
- Weight:** **275 grams** (=/+ 275 gr =/- 280 gr)
- Thickness:** **based on weight of 275 grams**
Approx 1.75 mm (1 model = 1 batch = +/- tolerance of 0.05 mm)
- Height:** thickness of panel + 15 mm (Total approx 16.75mm)
- Surface:** smooth without cracks
- Cutting edge:** 90 degrees with +/- 0.5 mm tolerance sideways per 500 mm and +/- 0.7 mm diagonal
- Material:** white bagasse (natural bleached sugarcane pulp)
- Treatment:** natural water and oil resistance agents added
- Retail pack:** 12 panels covers 3m² or 32 square feet
- Description:** Pulp of Sugarcane Bagasse or of other Fibrous Cellulosic Material; Moulded or pressed articles of Sugarcane Bagasse pulp or of other Fibrous Cellulosic Material. Other pulp, cellulose wadding and webs of cellulose fibres, cut to size or shape; other articles of Sugarcane Bagasse pulp, cellulose wadding or webs of cellulose fibres.
- flammability class:** Class C, but we advice to use Class A fire proof coating / fire retardant paint like DC333 after installing for best and safest result!



Copyright:
Information courtesy of www.mywallart.com

Installation

MATERIALS:

Wallpaper Knife
Tape Measure
Level
Filler
Steel Ruler
Sandpaper
Paint
Latex / multifunctional glue
Nails
Paint Brush

1st step: SURFACE AND WALLART PREPARATION

3d Wall Panels are made to install over flat surfaces that are clean, dry and free of loose debris. 3d Wall Panels can be adhered to the wall directly out of the box with chosen adhesive.

Wall treatment before use:

The wall surface must be clean and even. Any holes must be filled prior to application. If the wall surface is plastic or lacquered it must be fully sanded prior to application. If the wall is made out of plasterboard, it is recommended that an undercoat primer sealer be applied to prevent the glue from being absorbed by the plaster.

2nd step: INSTALLATION AND ADHERING TO WALL

It is essential for your layout to be well planned. Determine whether the installation will be wall-to-wall, a floating design that leaves an even border, a border strip around the room etc. If you are unsure lay the board out on the floor or prepare a sketch to confirm plans. 3d Wall Panels should be glued directly onto the wall by using latex or multi-functional glue. If the board has a slight bow, it can gently be flexed to lay flat before adhering to the wall. If you have trouble with a stubborn area or corner, tack down with a finishing nail, leaving in until dry, and address hole(s) after priming. In addition to spreading evenly the adhesive on the wall, coating the back of the board on flat areas will help ensure an immediate bond. Take care in making sure that the tiles are butted as tightly as possible to one another. This will help minimize seams. Run a thin putty knife or finger along joint to remove excess adhesive. Use a damp rag to blot off excess adhesive. Minimize rubbing to avoid balling of the pulp on the board.

3rd step: PLACING 3DBOARD ON THE WALL

Regardless of the type of adhesive you use the application process is the same. Make sure the panels are positioned straight and level by using a level or marking lines on the wall. It is important to take the straightness of the wall and other obstacles into account early on.

On a wall-to-wall installation, when at all possible, work across the wall from corner to corner starting at the top. This will reduce the need to cut the boards down in size and allow cut boards to fall into more inconspicuous areas. It is essential that you make sure all the edges are properly bonded to the wall during the installation process. In any difficult area nails may be used with the indentations to be filled in after the adhesive has fully dried. It is important to make sure there is no gap between the boards. If working from the center out, all boards that fall at edges may need to be cut. Plan the design well to ensure the result you are after. **Remember, measure twice and cut once.**

4th step: PRIMER COAT

After the 3D Wall Panels are all placed on the wall and the adhesive has fully dried we recommend the first sealer coat be applied before any finishing work is started to seal the 3D Wall Panels.

5th step: FINISH WORK

A modular product will have seams. If this is part of your design plan there is no need for additional work. If you looking for a more seamless finish you can use plaster, caulk gypsum (PH value is neutral) snow filler, putty filler etc on all joints before final primer coat. Keep caulk cleaned up and smooth by sanding it finely as you go because it cannot be sanded once completed.

6th step: PAINTING

If you followed the preparation and installation instructions carefully, you should now have a beautiful tiled wall ready for painting. 3D Wall Panels can be brushed, rolled, or sprayed. Painting a completed 3d Wall Panels wall is the same as painting drywall or plaster.



C: Vicky : 082 552 0751

Clinton : 072 394 7626

E: vicky@3dwalldesigns.co.za

clinton@3dwalldesigns.co.za

W: www.3dwalldesigns.co.za

Simply Stunning!